

Cold Climate Grape Growing 30 Years and Counting

John Marshall

Great River Vineyard/Nursery

Lake City, MN

www.greatrivervineyard.com

grv@mchsi.com

Presented at the
Iowa Wine Growers Association Annual Convention
February 10, 2007



Beginnings

First planting - 1975

MGGA charter member

Commercial venture - 1982

Commercial business:

Wine/table grapes

Nursery - cold hardy varieties

Lessons Learned . . .

Do not use child labor

Do not use salvaged wire

Do not take

extended summer vacations

Tips . . .



Try not to lose your love of wildlife

Avoid Tendinitis!



Sharpen pruners often
Always bring loppers or saw

Young Vines to Bearing Vines

Transition vines slowly to bearing

2 year old vines - no fruit

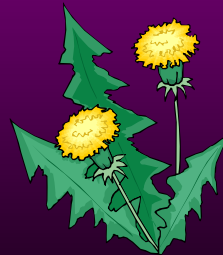
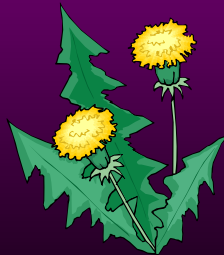
Foliage develops faster than roots

**Be conservative - don't rush
vines into bearing**

Weed Control

This is the most boring subject
in grape culture . . .

But it is the most critical!



**#1 Reason
Vineyards**

Fail:



Failure to control weeds

Multiple Trunks

Over-used

Misunderstood

Often unnecessary

Theory

Two trunks - one old/one new

In event of cold injury . . .

**One trunk (normally young one)
continues bearing**

**Does not affect winter survival
of the vine**

Upside of Multiple Trunks

**Can allow marginal varieties
to be more profitable
at your site**

Downside of Multiple Trunks

**Training takes additional
time and money**

**Pruning is more complex
and more time consuming**

Vine energy divided by two/three

Downside continued . . .

One trunk will be dominant:

Variable ripening

Variable quality

Replacement is:

Continuous/Costly

For the life of the vine

Use multiple trunks for:

**Varieties proven marginal
at your site**

**Cold tender varieties requiring
winter cover**

Combating crown gall

Multiple Trunks . . .

**Not for all varieties
in all areas
at all sites**

Justify before implementing!

Marketing Your Crop



Do your homework!

Before planting:

**Poll wineries for varieties
most in demand**

First Harvest

Contact wineries in spring

**Be specific on varieties/pounds
available**

Send letters/photos to wineries

Martell Vineyards

Tom and Deb Martell

www.martellvineyards.com

439 208 Ave Somerset WI 54025

715-247-3386



Invite winemakers to view crop

Sell crop long before harvest



Take Pride



**Delivering a crop of
quality grapes
is an accomplishment!**

Questions???

